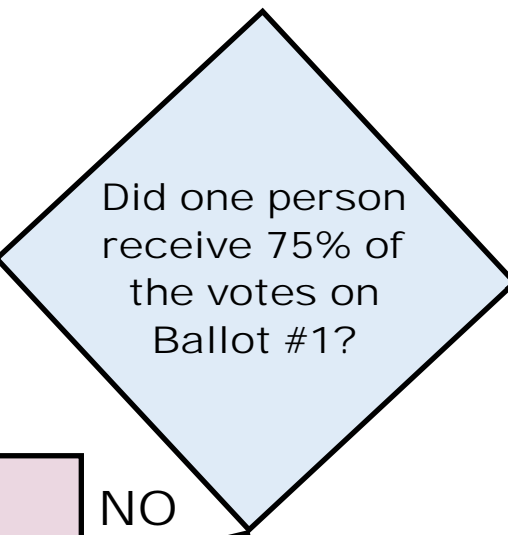


Friday Afternoon Plenary Session

START

Ballot #1

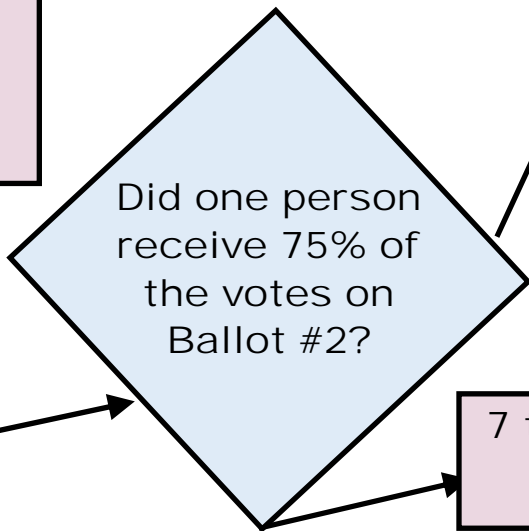
- Voting is done by writing a name on a blank ballot.
- All pastors in the ELCA are eligible.



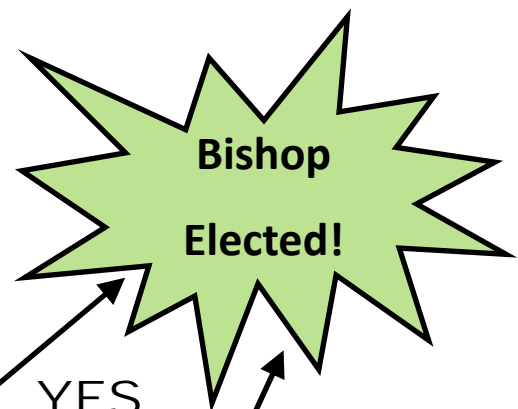
Only opportunity to withdraw from election prior to Ballot #2

Ballot #2

Includes all who received at least 1 vote on Ballot #1 and who did not withdraw.

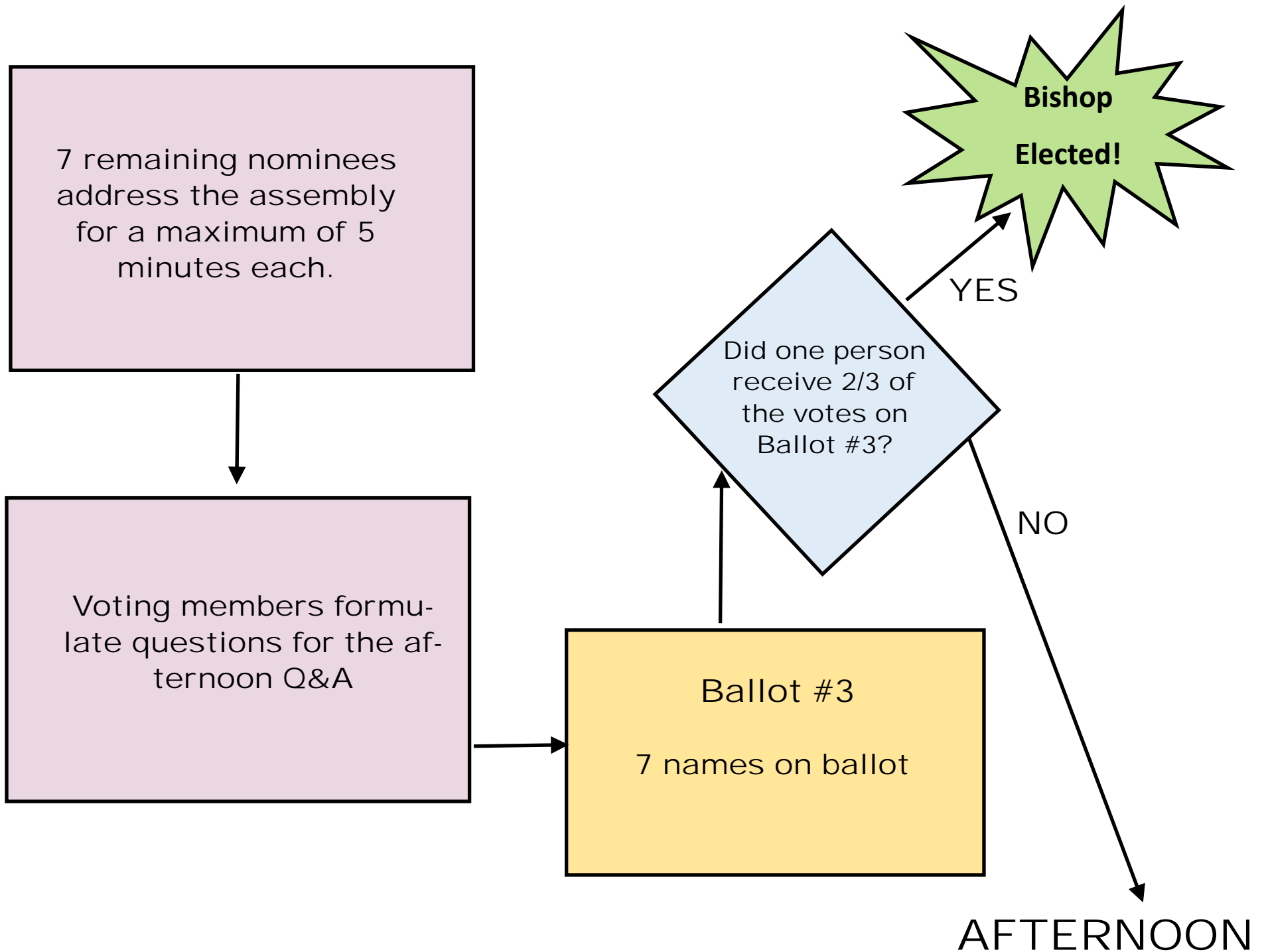


7 top vote getters provide biographical info



SATURDAY

Saturday Morning Plenary Session



Saturday Afternoon

Synod Council Working Lunch

Groups of Council members organize voting member questions, combine similar ones, and determine the order that questions will be asked.

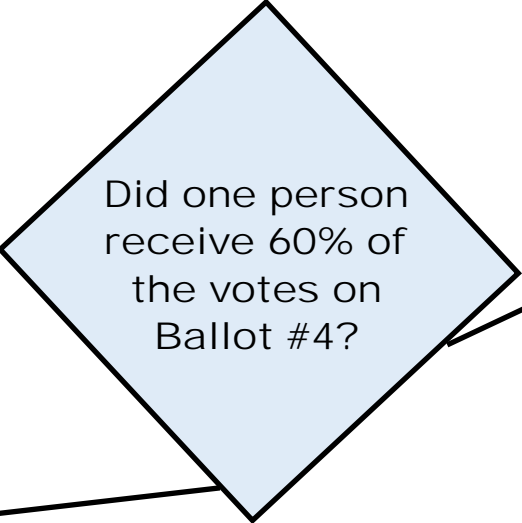
Question & Answer Sessions

- Top 3 nominees from Ballot #3 participate (top 4 if there was a tie on Ballot #3).
- Assembly is divided into thirds (or fourths). Voting members and visitors remain in their assigned rooms. Nominees move among rooms.
- Each session is about 45 minutes, with 10 minutes between sessions. Questions posed within each room are the same for each of the nominees.

SUNDAY

Sunday Morning Plenary Session

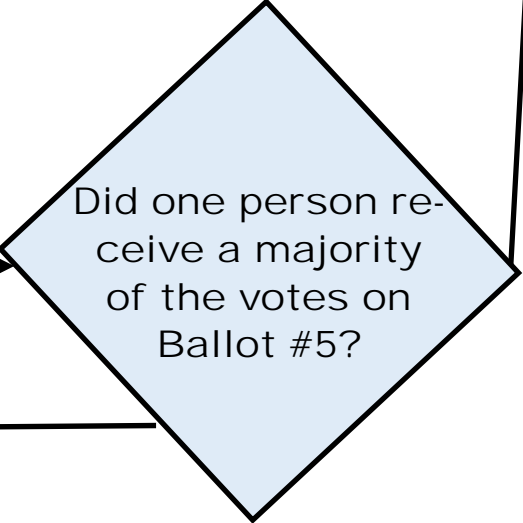
Ballot #4
3 names on ballot



Bishop Elected!

Top 2 nominees from Ballot #4 address the assembly for a maximum of 10 minutes each.

Ballot #5
2 names on ballot



NO (Vote Again)